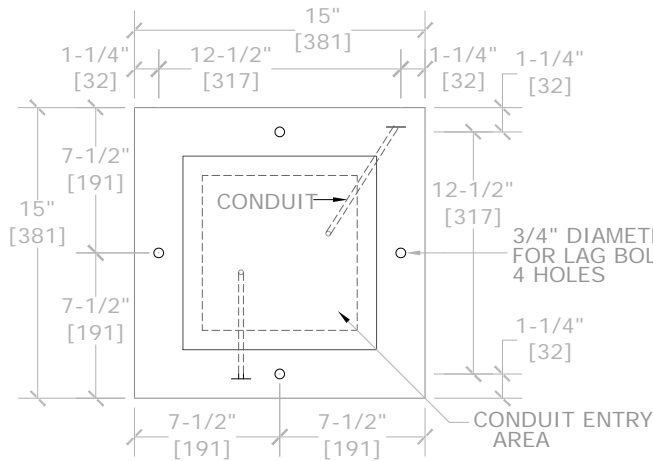
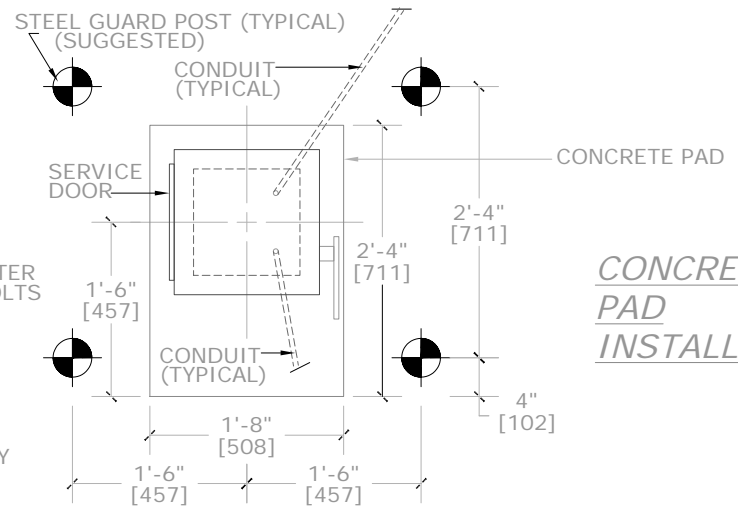


LAG BOLT DETAIL

TYPICAL-MINIMUM REQUIREMENT



GATE BASE DETAIL



CONCRETE PAD INSTALLATION

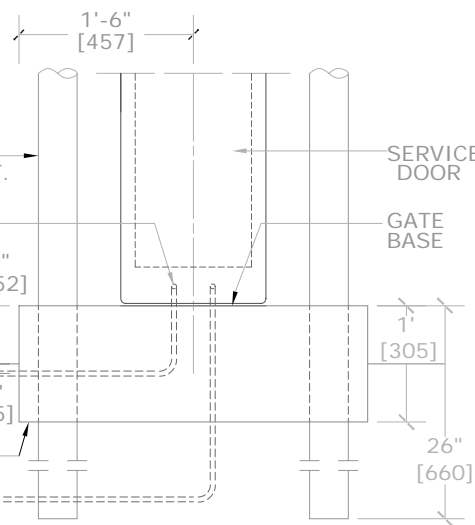
SUGGESTED STEEL GUARD POST
4" DIAMETER x 6' LONG (102 x 1830)
SET IN CONCRETE FILL WITH CONCRETE
DOME & SMOOTH CONCRETE ON TOP OF POST.

EXTEND ALL CONDUITS 2" (50mm) ABOVE
CONCRETE SURFACE.

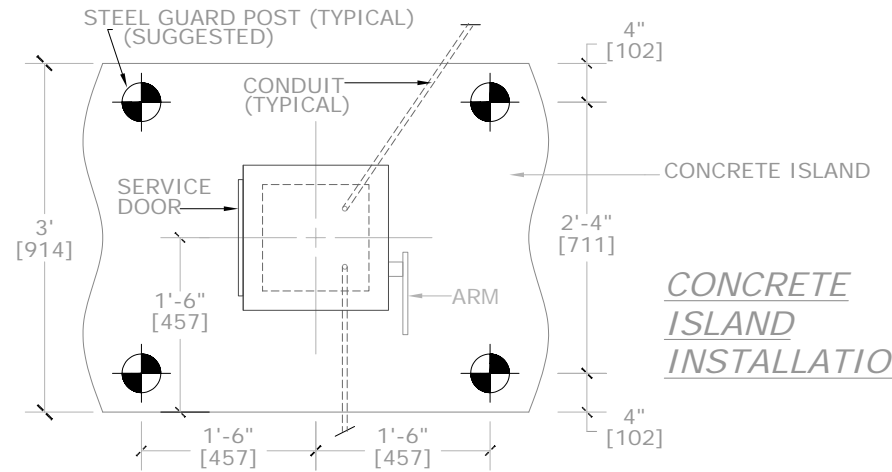
DRIVEWAY SURFACE
1/2" CONDUIT FOR LOOP LEADS
(TYPICAL)

CONCRETE ISLAND OR PAD 3000psi
CONCRETE. TOP MUST BE LEVEL & SMOOTH
1' [304] HIGH-SUGGESTED.

POWER SUPPLY CONDUIT (TYPICAL)



CROSS SECTION DETAIL



CONCRETE ISLAND INSTALLATION

PROJECT		STANDARD		
REFERENCE		FLEX-18 GATE		
TITLE		BASE DETAIL		
DATE	REVISION	DWG. BY	ORDER NO.	DATE
		V.V.	N/A	MAR 2005
		DESIGNED BY	SCALE	DWG. NO.
		J.M.	N/A	C72-20802

**CANADIAN PARKING EQUIPMENT LTD.
AMERICAN PARKING EQUIPMENT INC.**

CPE APE 7050 TELFORD WAY, UNITS 7 & 8, MISSISSAUGA
ONTARIO, CANADA, L5S 1V7
TEL: 905-673-0093 FAX: 905-673-6687
TOLL FREE: 1-800-565-4886